



# Rouge River AOC Habitat Restoration Design at Merriman Hollow & Wallaceville Parks

In partnership with:



\$365,000 in grant funds provided by the Great Lakes Restoration Initiative (GLRI) through the U. S. Environmental Protection Agency (USEPA) for design at both Merriman Hollow & Wallaceville Parks.

## The Merriman Hollow & Wallaceville Habitat Restoration Design will:

- Create 1.6 acres of riparian wetland or wet prairie
- Provide natural habitat for mammals, reptiles, fish & amphibians
- Aid in the removal of BUIs

In 2023 the Alliance of Rouge Communities (ARC) received grant funding from the USEPA GLRI to design habitat restoration at Merriman Hollow Park and Wallaceville Park within the Rouge River Watershed.

The Rouge River watershed is a designated Area of Concern (AOC) under the Great Lakes Water Quality Agreement (GLWQA) and has three Beneficial Use Impairments (BUIs) associated with fish and wildlife habitat: Degraded Fish and Wildlife Populations, Degradation of Benthos, and Loss of Fish and Wildlife Habitat. The Rouge River Advisory Council (RRAC), the Public Advisory Council (PAC) for the Rouge AOC, in March 2016 approved a list of projects that need to be completed to remove the Rouge AOC habitat BUIs. As part of that list, habitat restoration at Wayne County's Merriman Hollow Park and Wallaceville Park were considered as having a significant impact on the removal of the BUIs.

## Conditions Prior to Restoration Design at Merriman Hollow & Wallaceville

As water quality in the Rouge River continues to improve, this project will build on past efforts to restore some of the damage done during the last century. Tributaries of the Rouge River have suffered from loss and impairment of aquatic habitat and increased frequency and magnitude of flood flows, primarily due to increasing urbanization within the watershed. The flat river slope and the meandering channel cannot pass the large flows associated with rain events. Upstream urbanization continues to exacerbate this problem as runoff from increased amounts of impervious surfaces culminates in flooding within the river system, bank erosion, and continued habitat degradation.

## Merriman Hollow Restoration Design - City of Westland

Merriman Hollow Park, part of the Wayne County Parks system, is located in the City of Westland along Hines Drive and the Middle Rouge River just west of Merriman Road. The proposed project site is adjacent to the Rouge River and would create wetland/wet prairie habitat at the site.

### Existing Conditions at Merriman Hollow Park



Existing swales adjacent to the river will be restored with native vegetation by seeding and planting.



Large swath of riparian woody invasive species will be managed and maintained for the duration of the project.



Mowed turf adjacent to Hines Drive will be converted to wet prairie by converting turf to native seeding and plantings.

## Wallaceville Park Restoration Design - City of Dearborn Heights

Wallaceville Park is located along Hines Drive within Wayne County Parks, in the City of Dearborn Heights. Much of the area is routinely mowed and often floods. The proposed project plan includes creation of wetlands and/or wet prairie south and east of gravel parking lot located south of Hines Drive and east of Beech Daly Road. The proposed project site is adjacent to the Rouge River and would create wetland/wet prairie habitat at the site.

### Existing Conditions at Wallaceville Park



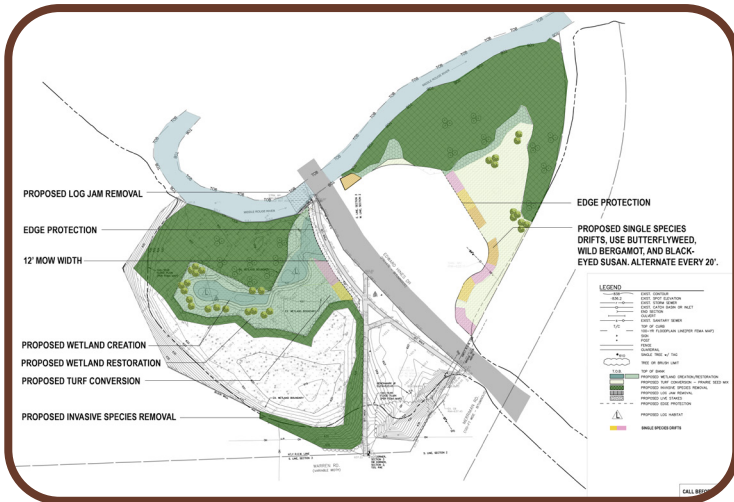
Existing wetland adjacent to parking lot will be restored and expanded to functional wetland habitat hydrologically and vegetatively.



Wetland habitats including open wetland and wet prairie will be created in the underutilized mowed turf area East of the Rouge River.

### Anticipated activities at Merriman Hollow Park:

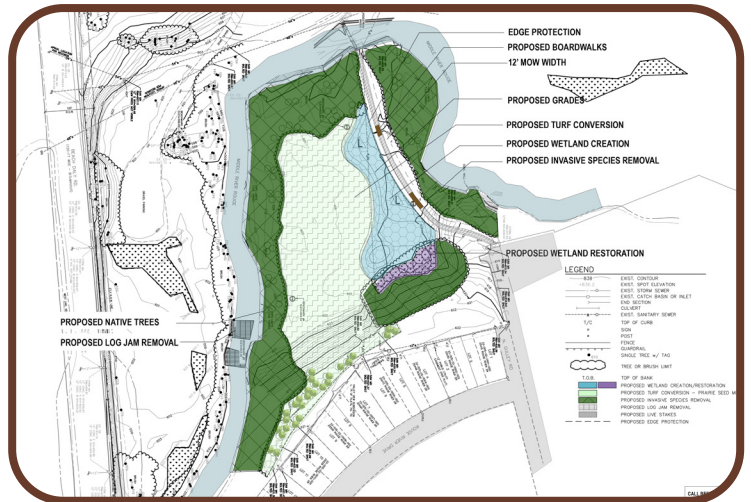
- Removal of invasive plants.
- Covert mowed lawn to wetland and/or wet prairie.
- Grade site to provide various emergent habitats within the wetland.
- Incorporate native plants and shrubs as well as seeding native wildflowers and grasses into designated areas.



Merriman Hollow Park conceptual design

### Anticipated activities at Wallaceville Park:

- Covert mowed lawn to wetland/wet prairie.
- Install at-grade path to maintain access to the exiting foot bridge that provides access to an active recreation area.
- Grade adjacent areas of the river to provide storm water storage capacity while creating riparian/wetland habitats.



Wallaceville Park conceptual design

## About the Alliance of Rouge Communities

The ARC is a 501(c)(3) non-profit organization consisting of local municipalities, counties, educational institutions and stewardship groups working together to improve the Rouge River. Founded in 2005, the ARC is funded by membership dues from local governments and supported by grants. The ARC and its partners work cooperatively to meet water quality requirements mandated by the state's stormwater permit and to restore beneficial uses, such as canoeing, fishing and other recreational activities, to the Rouge River. That means better water quality for less cost to its members!

**For more information about this project and other ARC activities visit our website at: [www.allianceofrougecommunities.com](http://www.allianceofrougecommunities.com)**

*This project is funded through a grant from the U. S. Environmental Protection Agency Great Lakes Restoration Initiative (grant number GL-00E003452)*

